



June, 2013

Theta-Alpha-Gamma Synchrony for Infiniti Software Reports Guide

The main TAG Sync screen (figure 1) and the associated z-score screen (figure 2) have been described elsewhere. Here we will look at the screen for selecting data and generating reports - figure 3.

Figure 1

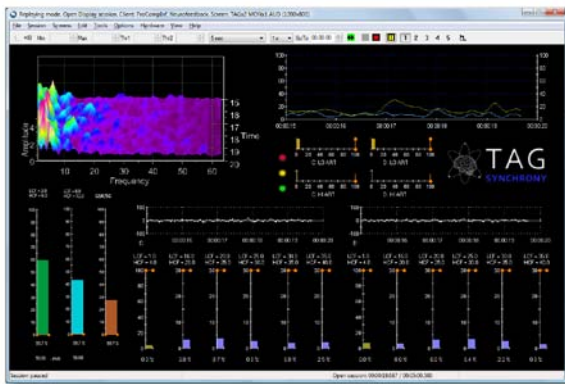


Figure 2

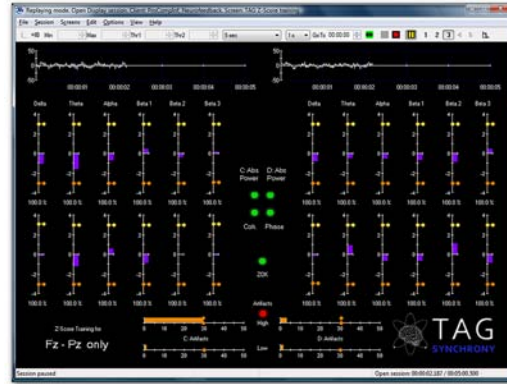


Figure 3 - TAG Sync Report Screen

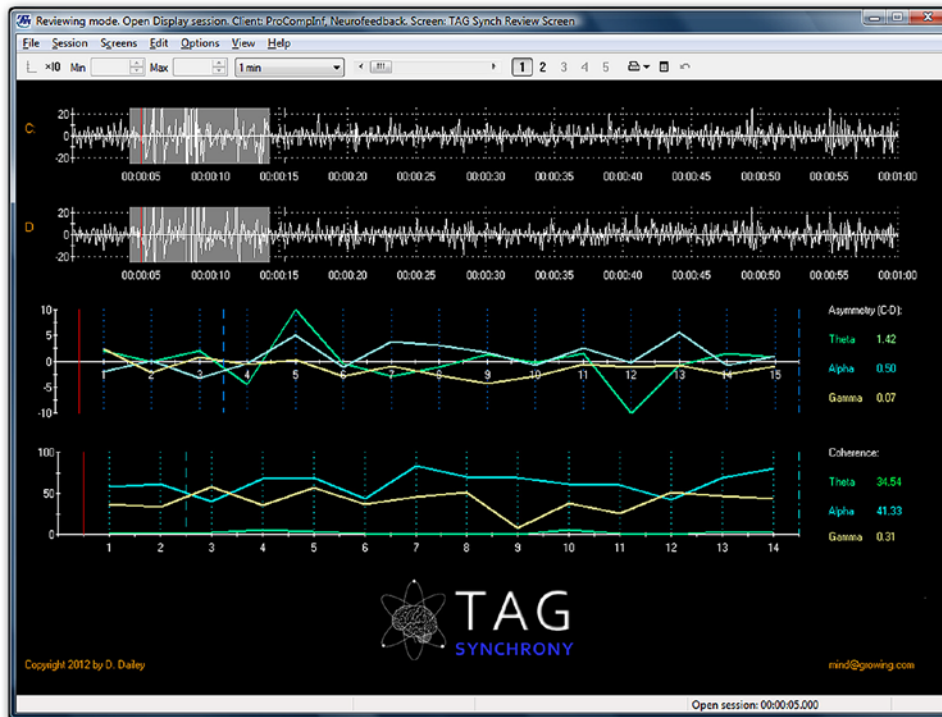
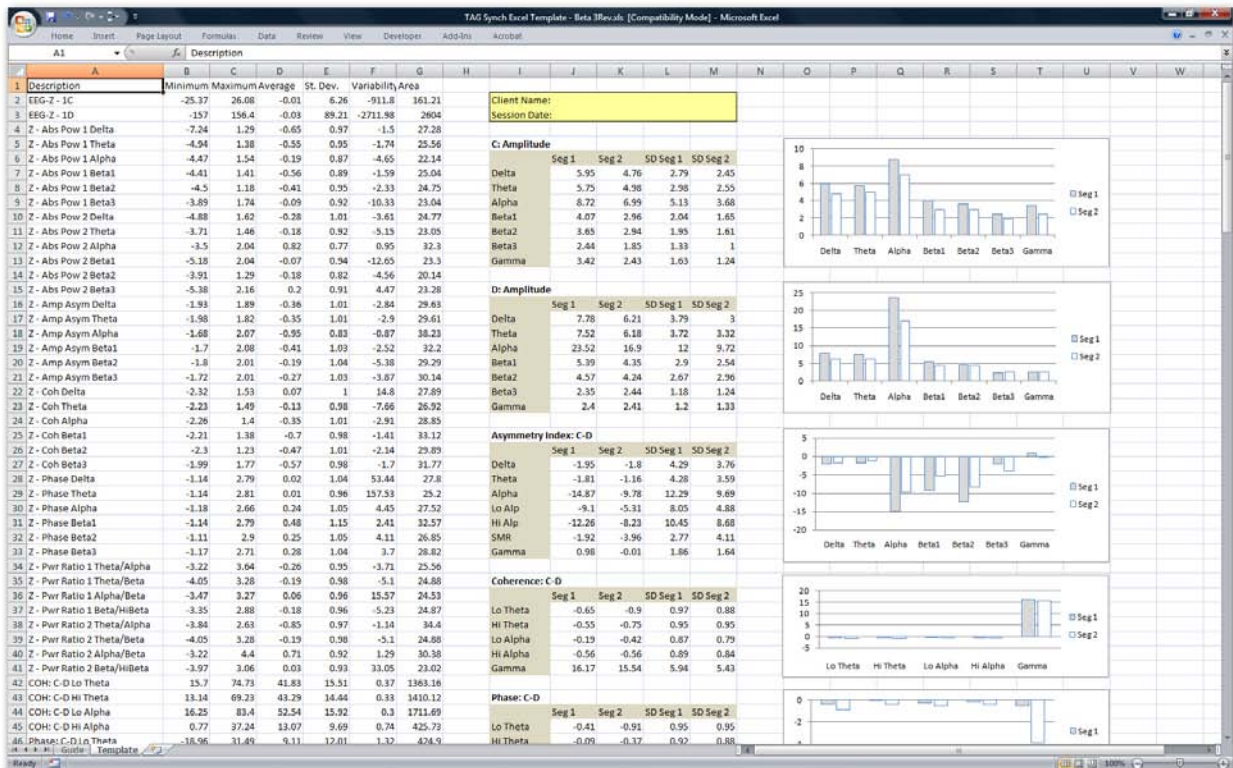
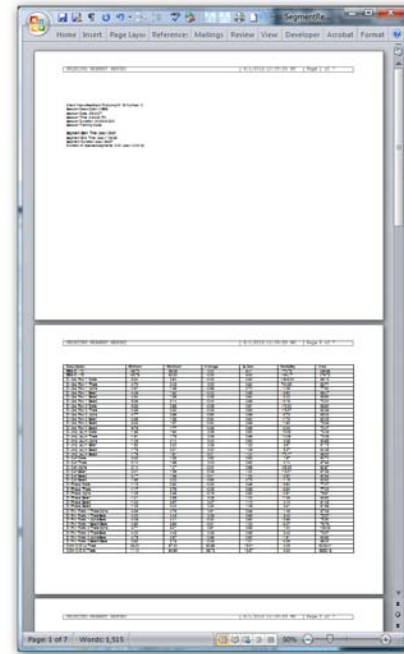
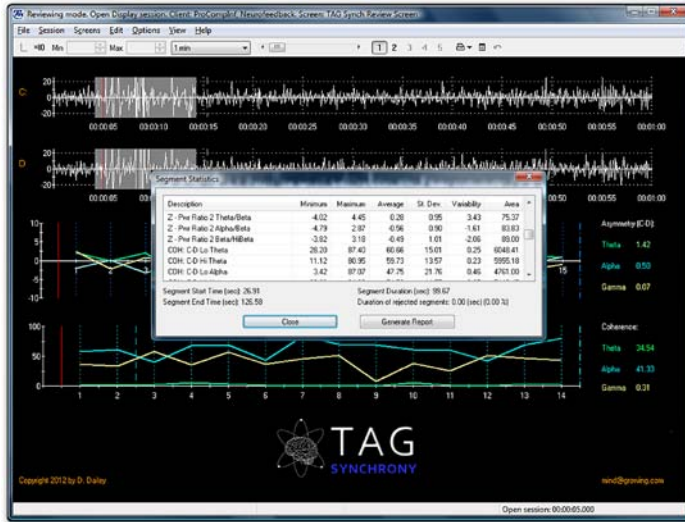


Figure 4 shows how segments can be selected from 2 regions of the session data, such as pre-training and post-training. The data can be sent to a Word document and then into Excel. The accompanying spreadsheet automatically creates the summary and charts.

Figure 4 - Report generation in TAG Sync



For further information:

www.tagsynchrony.com

www.mindsupplies.com

www.cortexercise.com

www.growing.com/mind

Best wishes,

Douglas Dailey

Douglas Dailey, L.Ac., BCB, BCN, QEEG Diplomate