

Using your TAG Sync Screens

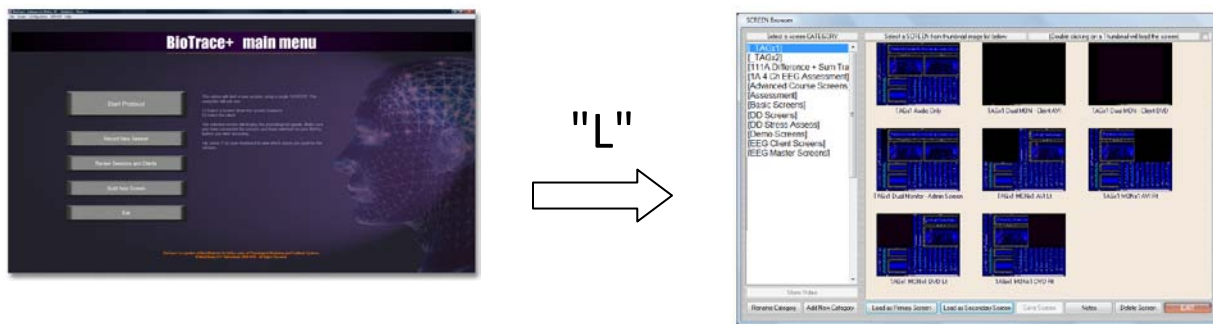
TAGx1 for Nexus

Theta Alpha Gamma Synchrony

May 15, 2013

1 - Using the Nexus Screen Browser confirm that your screens are ready to load.

Launch Nexus BioTrace+. From the Main Menu screen press the "L" key to **Load a screen**. See the Nexus Screen Browser window and from the left hand list of screen categories select "_TAGx1". You will see the list of your TAGx1 screens on the right.



2 - Decide which screen(s) you need for this session.

You will notice that the screens indicate 1) how many monitors are used, 2) whether the feedback is audio only, DVD, AVI (or other video file), and 3) where the client is located (Rt-right or Lt-left). Individual screens are described further down.

3 - Use your screens

Your screens are ready to use as a hybrid neuro-biofeedback workstation with multiple inhibits and two coupled rewards. You can also use it (with single reward frequency) as a standard infra/ultra-low frequency bipolar or SMR referential-type neurofeedback. For more information on TAG Sync visit www.tagsynchrony.com.

Best wishes,

Douglas Dailey

The first two screens look identical. The top left is optimized for audio feedback only. The second screen is the administrator screen to be used in dual monitor setups with either of the client screens shown in the second row. The AVI file player plays other video formats as well, such as mpg and wmf.

The third row shows a single monitor set using a DVD player located on the left side and on the right side. You can choose which you use for convenience. The bottom row shows right and left hand versions of a single monitor setup using video files. Be sure to try the sample AVI puzzles provided by "A Matter of Mind".



