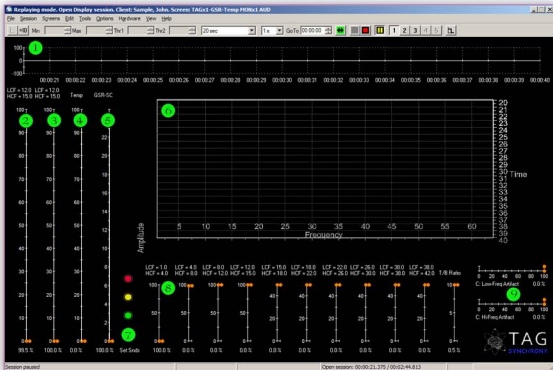




# TAG Sync x1 Infiniti

Theta Alpha Gamma Synchrony

This single channel design allows you to monitor and train two EEG frequencies (cross-frequency coupling) while employing multiple inhibits and shaping peripheral responses (BFB Mod) such as skin conductance (GSR), heart rate variability (HRV), pulse rate and temperature.



- 1 - Raw EEG
- 2 - Reward 1 (e.g., Theta)
- 3 - Reward 2 (e.g., Alpha)
- 4 - Reward 3 (BFB - Temp)
- 5 - Reward 4 (BFB - GSR)
- 6 - Spectral display
- 7 - Indicator lights Green - OK, Yellow - BFB, Red - Spindle or artifact
- 8 - Ten inhibit bins for training beta spindling, etc
- 9 - Standard Infiniti Artifact Instruments