

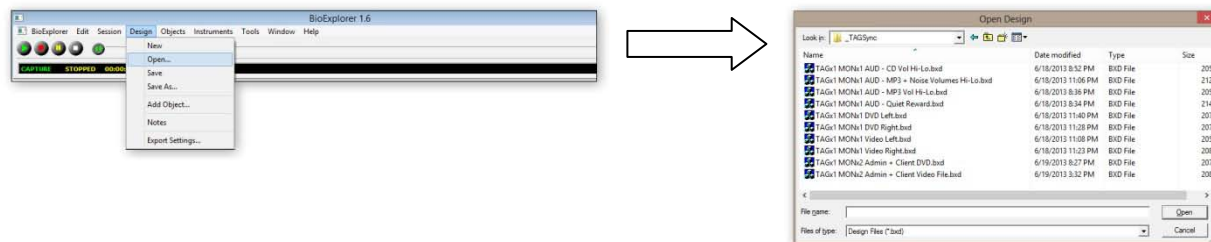
Using your TAG Sync Screens and Designs

## TAGx1 for BioExplorer Theta Alpha Gamma Synchrony

June 20, 2013

### 1 - Open BioExplorer and confirm that your screen designs are ready to use.

This step assumes that you installed the BioExplorer designs and media files as described in the accompanying installation manual. Open BioExplorer and from the menu bar choose "Design" then "Open" then from the list of available designs select the category "\_TAGSync". You will see the list of your TAGx1 screens as shown below.



### 2 - Decide Which Screen(s) You Need for this Session.

You will notice that the screen file names indicate 1) how many monitors are used - MONx1 or MONx2, 2) whether the feedback is audio only, or DVD or video file, and 3) where the client is located (Rt-right or Lt-left of trainer). Individual screens are described below.

### 3 - Use Your Screens

You screens are ready to use as a neurofeedback workstation with two rewards, multiple inhibits, and tools for monitoring phase resets. This particular set of screens can be used whenever a global synchrony or phase-amplitude coupling approach is favored. For more information on TAG Sync visit [www.tagsynchrony.com](http://www.tagsynchrony.com). You can use it in most situations where you would use single channel regardless of where the reference electrode is placed.

Best wishes,

*Douglas Dailey*

## 4 - Included Screen Designs

The first 5 screens are designed for use when only a single monitor is available. The first screen comes in 4 versions for different types of audio feedback. The last two rows show the screens used for single-channel TAGSync when a second monitor is available.

